

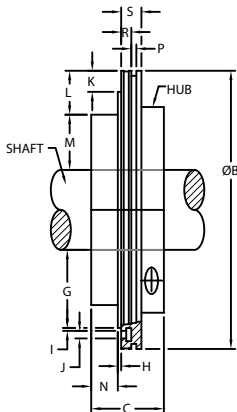
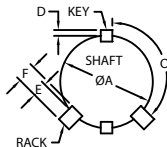
MALE SLOTTER/STITCH HEAD

Machine _____ Size or Model _____ OEM No. _____ Serial No. _____

Spec'd by _____ Date _____ Plant Name/Location _____

- A) Shaft Diameter _____
 B) Head Dia. Over Knurl _____
 C) OAL Width _____
 D) Key Height (over shaft) _____ Key Width _____
 E) Rack Height (over shaft) _____ Rack Width _____
 F) Actual Rack Height _____
 G) Shaft O.D. to Knife Step _____
 H) Knife Step Width _____
 I) Knife Step to Bottom of "T" Slot _____
 J) "T" Slot Width _____
 K) Knife Step O.D. to Head O.D. _____
 L) Block Ledge O.D. to Head O.D. _____
 M) Shaft O.D. to Stitch Block Ledge _____
 N) Stitch Block Ledge Width _____
 O) Distance Around Shaft from 1st Key to Rack _____
 P) Top Stripper Groove Width _____ Stripper Groove Depth _____
 R) Top Stripper Groove from Face Nearest Knife Step _____
 S) Width of Knurled Area of Head O.D. _____

- Clamp Fit _____ Slip Fit _____
 "Rack Teeth Touch Shaft" _____ "Horizontal Rack" _____
 "T" Wrench Allen Size for Lock-up Bolts _____ Slip Fit Set Screw _____
 Male Slotter Knife Part Number _____
 Stitch Block Part Numbers _____
 Rack Wrench O.D. Over Teeth _____ Number of Teeth _____ Pitch _____
 Rack Wrench Hole Diameter in Head _____
 "T" Bolt Insertion Area: Knife Step Side _____ Hub Side _____



Additional Comments/Instructions:

CORRUGATED REPLACEMENTS, INC.

P.O. Box 2809 Blairsville, Georgia 30514

(800) 969-0881

(706) 781-6650 Fax (706) 781-6649

WWW.CORRUGATEDPARTS.COM